

COMMUNITY COMPOSITION



The majority of Eastside Families are Hispanic

More than **half** of children live below Federal Poverty Level

Hispanic average income is **less than half** that of Whites

\$35,908 HISPANIC
\$77,428 WHITE

5,645 children under 18 living in the footprint

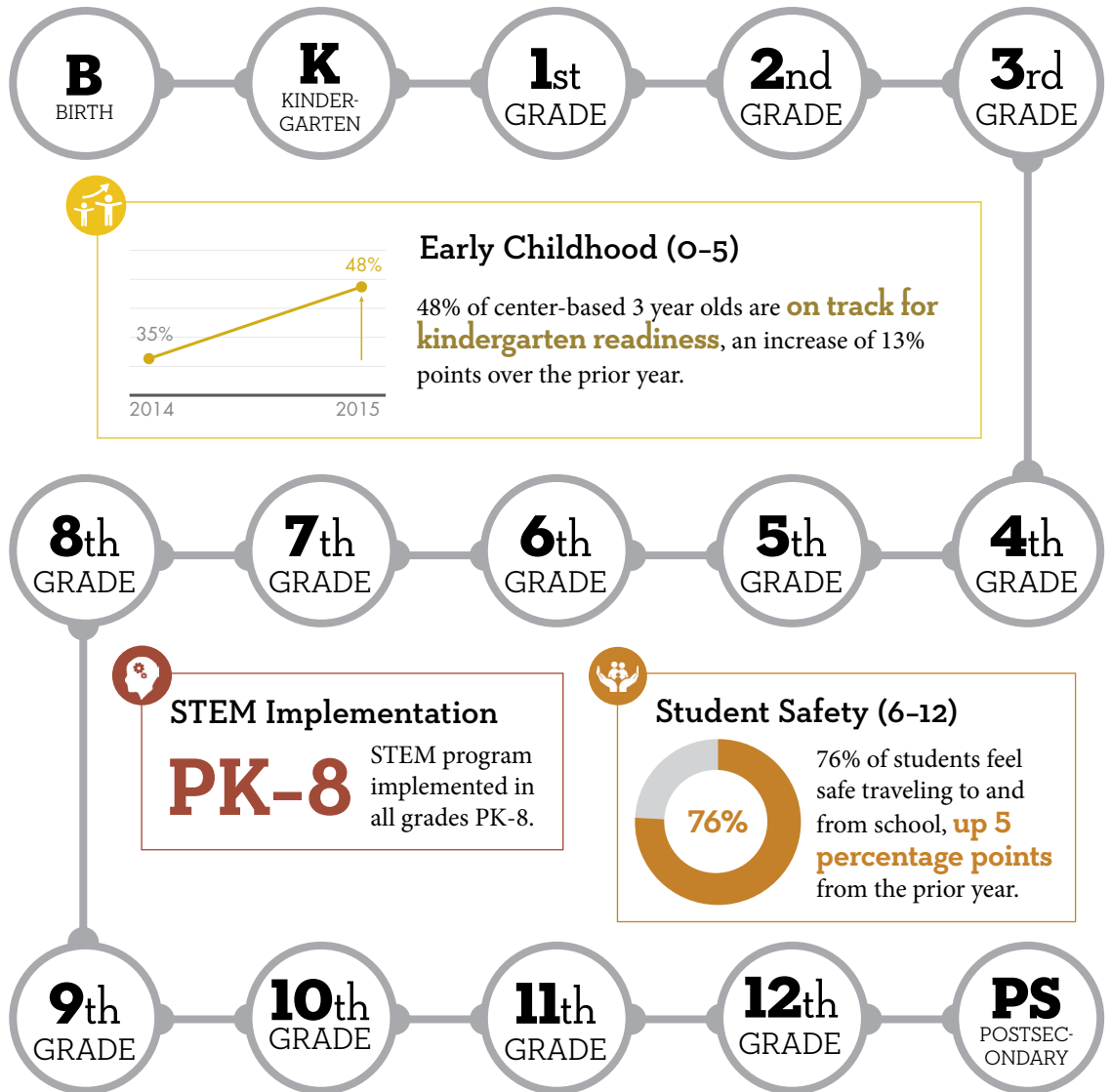
6 schools served
3 childcare centers
1 community center

3,039 children enrolled at target schools

55 partner agencies

MISSION

The Eastside Promise Neighborhood (EPN) unites institutional and resident stakeholders to leverage and strengthen the neighborhood's assets and resources so children and families are inspired to stay, grow, graduate, and stay. EPN is building a cradle to career continuum of solutions intentionally selected to improve educational and developmental outcomes for children and youth living on San Antonio's historic Eastside.



MAKING A DIFFERENCE

Following a collective impact framework, the Eastside Promise Neighborhood has worked with a multi-partner, cross-sector collaboration to construct a comprehensive cradle to career pipeline that inspires students through its STEM strategic plan, talent development efforts, and a robust set of integrated community resources. The compounding effect of aligning 'in-school' levers of change with resident led

'beyond school' and community revitalization efforts is making significant headway in student achievement. The impact of the work is transcending individual change and has resulted in a series of needed policy and system changes, which brings with it the promise of sustained effort over time, a necessary antidote to the decades of distress that preceded the PN opportunity.