

# DC PROMISE NEIGHBORHOOD

Washington, District of Columbia

## COMMUNITY COMPOSITION



98% of Kenilworth-Parkside families are African-American

**47%**  
of residents live below 150% of the Federal Poverty Level



The median household income is **\$26,210** COMPARED WITH **\$75,630** in DC at large



**1,801** children under 18 living in the footprint



**3** schools served

**1,049**

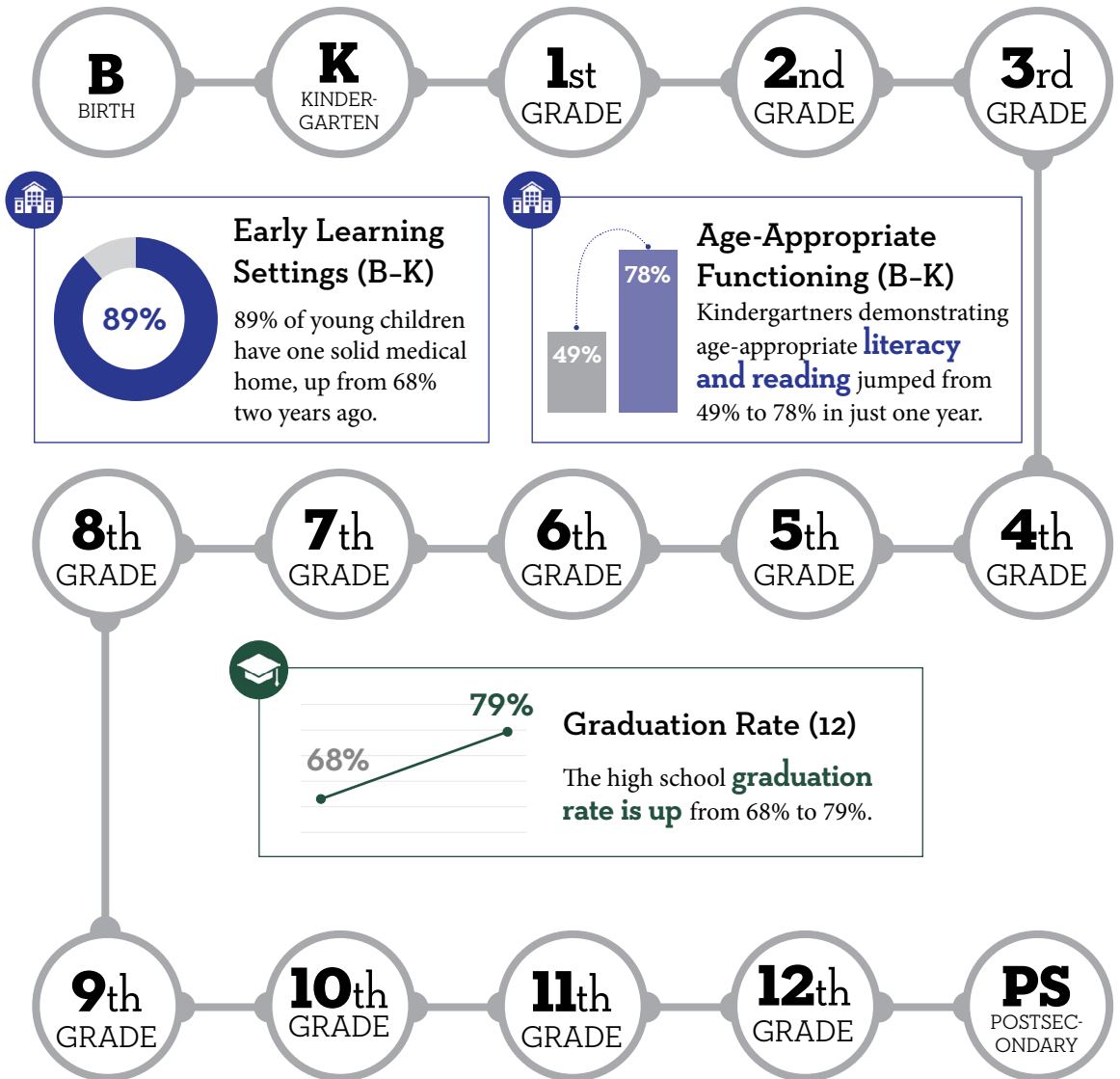
Children Enrolled at Footprint Schools



**15** partner agencies

## MISSION

The mission of the DC Promise Neighborhood (DCPN) is to support all members of the Kenilworth-Parkside community in improving the quality of their own lives and inspiring positive change in their neighborhood. Our vision is a sustainable, just, and prosperous community where healthy and safe places exist, and children and parents thrive.



## MAKING A DIFFERENCE

Missing more than 18 days of the school year can lead students in early grades to fall behind, fail courses, and eventually drop out of high school. In 2013, 63% of pre-K students were chronically absent at Neval Thomas Elementary School. In response, DCPN launched the Every Day Counts Initiative (EDCI), a

partnership between the school, local partners, and DCPN. EDCI uses weekly reports to identify students at risk of absenteeism, provide tiered interventions to families, and get absent students back on track. By 2015, EDCI had increased school attendance among preschoolers by 21%.