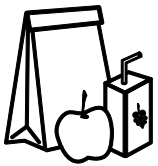


## COMMUNITY COMPOSITION



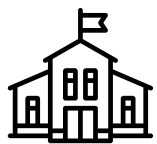
**95.4%** of Berea College Promise Neighborhood residents are white.

**45%** live below Federal Poverty Level



**76%** of children qualify for free or reduced lunch

**8,435** children under 18 living in the footprint



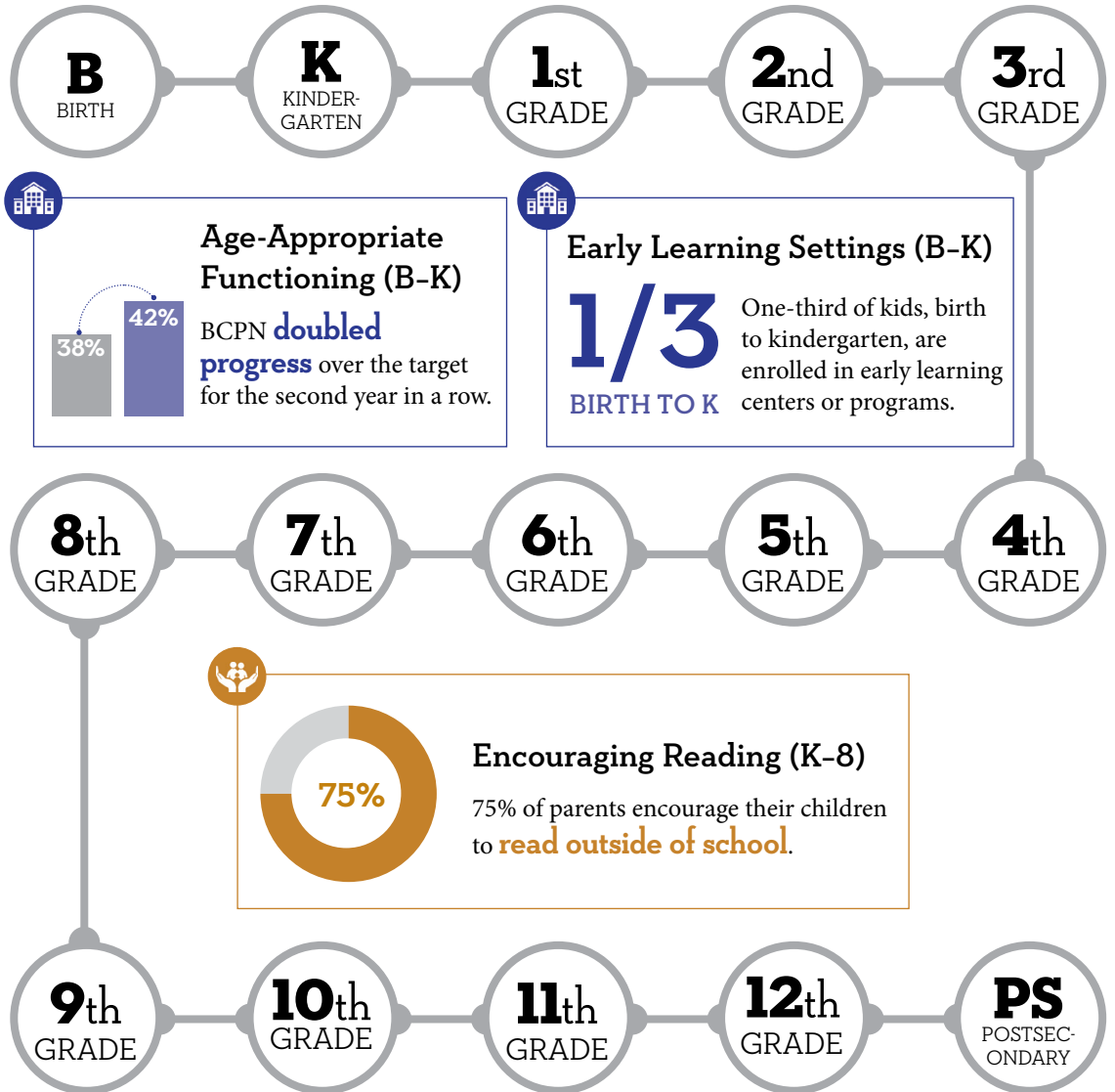
**16** schools served

**6,301** children enrolled at target schools

**6** partner agencies

## MISSION

Berea College Promise Neighborhood uses a place-based, student-focused theory to improve outcomes for children from cradle-to-career. Proven research drives this approach, contributing to the outcome of Berea College Partners for Education: All Appalachian Kentucky youth will succeed at school. This work encourages collaboration among school systems, families and community partners to provide all children with an educational advocate, individualized services and a path to success.



## MAKING A DIFFERENCE

The Early Childhood Services offered by the BCPN have been successful in increasing kindergarten readiness rates because of a teacher coaching initiative and the comprehensive approach to providing services to children and families. Children receive intensive interventions while in school and have access to summer programming. Parents can participate in a

variety of programming that helps strengthen them to be leaders. One parent described the impact: "My son started receiving intervention services at age three, and was so excited when the specialist visited. We participated in the programs and field trips. When he entered kindergarten he tested as ready. I know the services that he received helped him be ready."