



Promise Heights

Baltimore, Maryland

Promise Heights serves children and families in the West Baltimore neighborhoods of Upton and Druid Heights. The University of Maryland, Baltimore (UMB), the lead agency for this Promise Neighborhood, works with 15 partner agencies and five schools to provide an early childhood-through-postsecondary pipeline of supports. Promise Heights emphasizes family engagement and wraparound services for children that provides residents in the Upton and Druid Heights neighborhoods with the tools necessary to thrive in their schools, families, and careers.

COMMUNITY COMPOSITION

African American 92%

White 4%

Asian 2%

Latino 1%



45%

of residents live below federal poverty level

31%

of households are families with children

\$22,225

average median household income (per year) in Promise Heights

3,113

children live in the Promise Heights footprint

1,607

children are enrolled in partner schools

15 5

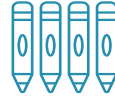
partner agencies partner schools

PROGRAM IN ACTION

ACADEMIC CHALLENGES

Kindergartener Development

44%



of kindergarteners are ready for school

Academic Proficiency Math

5%



of 3rd-5th grade students are proficient in Math

Academic Proficiency ELA

5%



of 3rd-5th grade students are proficient in ELA

Chronic Absenteeism

52%



of students are chronically absent from school

High School Graduation

44%



of students graduate on time

SELECT STRATEGIES

- Pre- and post-natal supportive services
- Opportunities for families to acquire early learning skills
- Developmental screenings and referrals for children experiencing developmental delays

- Promoting Alternative Thinking Strategies
- Provide after-school and summer programming for K-12 students
- Tutoring services embedded in K-3rd grade classrooms

- Use i-Ready academic assessment and instruction tool to match curriculum to academic proficiency
- Academic support to bolster student literacy and language arts skills
- Increase availability of after-school tutoring

- Support student attendance efforts using multi-tiered system of supports
- Assign chronically absent students to PromiseCorps members for individualized support
- Create high-energy positive culture of attendance through universal strategies

- Provide paid internships, apprenticeships and bridge programs for students prior to graduation
- Facilitate youth employment opportunities
- Expose students to career pathways through dual enrollment certificate programs

Source for academic challenges: grantee application and school year 2017-2018 data from grantee

NEIGHBORHOOD SNAPSHOT

Promise Heights facilitates key cradle-to-college-and-career services such as B'more for Healthy Babies—a community-based partnership designed to improve birth outcomes and maternal and child health; Parent University—a ten-week parenting education program incorporating evidence-based interventions to increasing responsive parenting; Early Childhood Mental Health Consultation—support to community-based preschools and public pre-K/K programs; Community Schools—a range of supports and services for children and their families from health and mental health services to after-school enrichment, college and career exposure and access, and parent programming; and Family Prosperity—financial case management, education, benefits screening, free income tax preparation, and housing support.