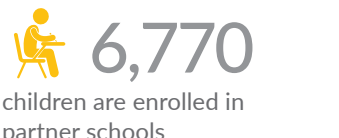
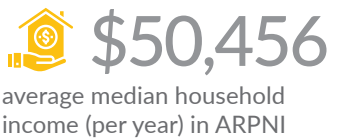
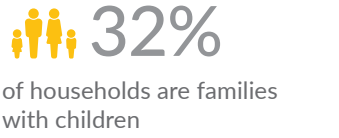
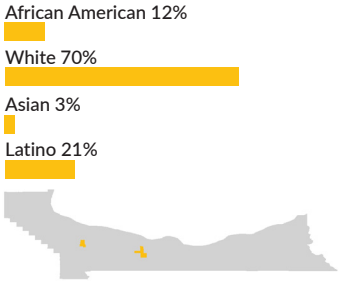




Albina-Rockwood Promise Neighborhood Initiative (ARPNI) Portland, Oregon

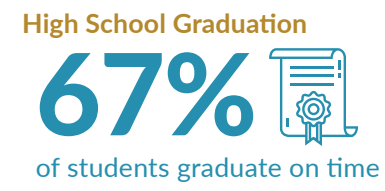
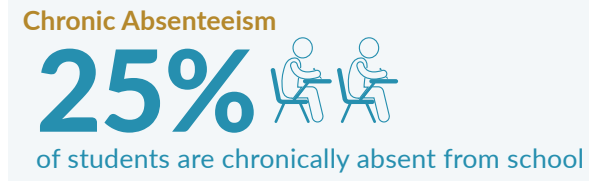
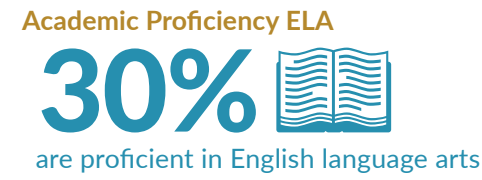
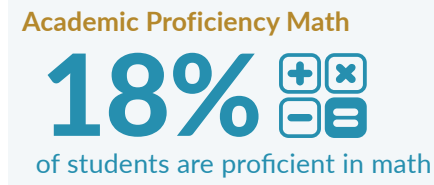
The Albina-Rockwood Promise Neighborhood Initiative (ARPNI) serves children and families in the Albina and Rockwood neighborhoods of Portland, Oregon. In partnership with six organizations and nine schools, ARPNI coordinates a two-generation (parent and child) continuum of supports focused on increasing student performance and family resilience. ARPNI and its partners approach their work with a shared commitment to achieving equity through the provision of culturally specific and responsive best practices and an implementation framework grounded in a strong evidence base.

COMMUNITY COMPOSITION



PROGRAM IN ACTION

ACADEMIC CHALLENGES



Source for academic challenges: grantee application

SELECT STRATEGIES

- Increase the number of Early Head Start slots
- Help children and parents prepare for success through Juntos Aprendemos Early Literacy program
- Supportive services for expecting parents

- STEM partnerships and stewardships
- Individual Success Plans to help students outline goals

- Match volunteers with students who do not meet reading benchmarks
- Culturally specific youth supports for continuous academic improvement

- Support school personnel to ensure students reach attendance goals
- Address non-school barriers to attendance through trauma-informed care and assertive engagement

- Develop a college-going culture for youth
- Individual Success Plans for high school students' postsecondary plans

NEIGHBORHOOD SNAPSHOT

Self Enhancement, Inc. (SEI), is a culturally specific service delivery organization for African American youth and families with demonstrated success at improving high school graduation rates. SEI's Whole School Model's foundation consists of four key components; the "relationship model," creating a "culture of success," a relevant and culturally appropriate "continuum of services," and "comprehensiveness" of working with the whole child at school, at home, and in the community. The goal of the Albina-Rockwood Promise Neighborhood is to improve educational and development outcomes along a cradle-to-career continuum leading from improved kindergarten readiness to successful high school graduation and attainment of a postsecondary degree, vocational certificate, or credential.