

COMMUNITY COMPOSITION



FEMALE-LED HOUSEHOLDS **40%**

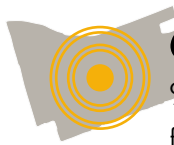
STUDENTS LEARNING ENGLISH **58%**

The majority of Chula Vista families are Latino

Nearly **ONE-THIRD** of the children live below Federal Poverty Level



66% of Chula Vista adults **DO NOT HAVE** a high school diploma



6,744 children under 18 living in the footprint



5 schools served

62%

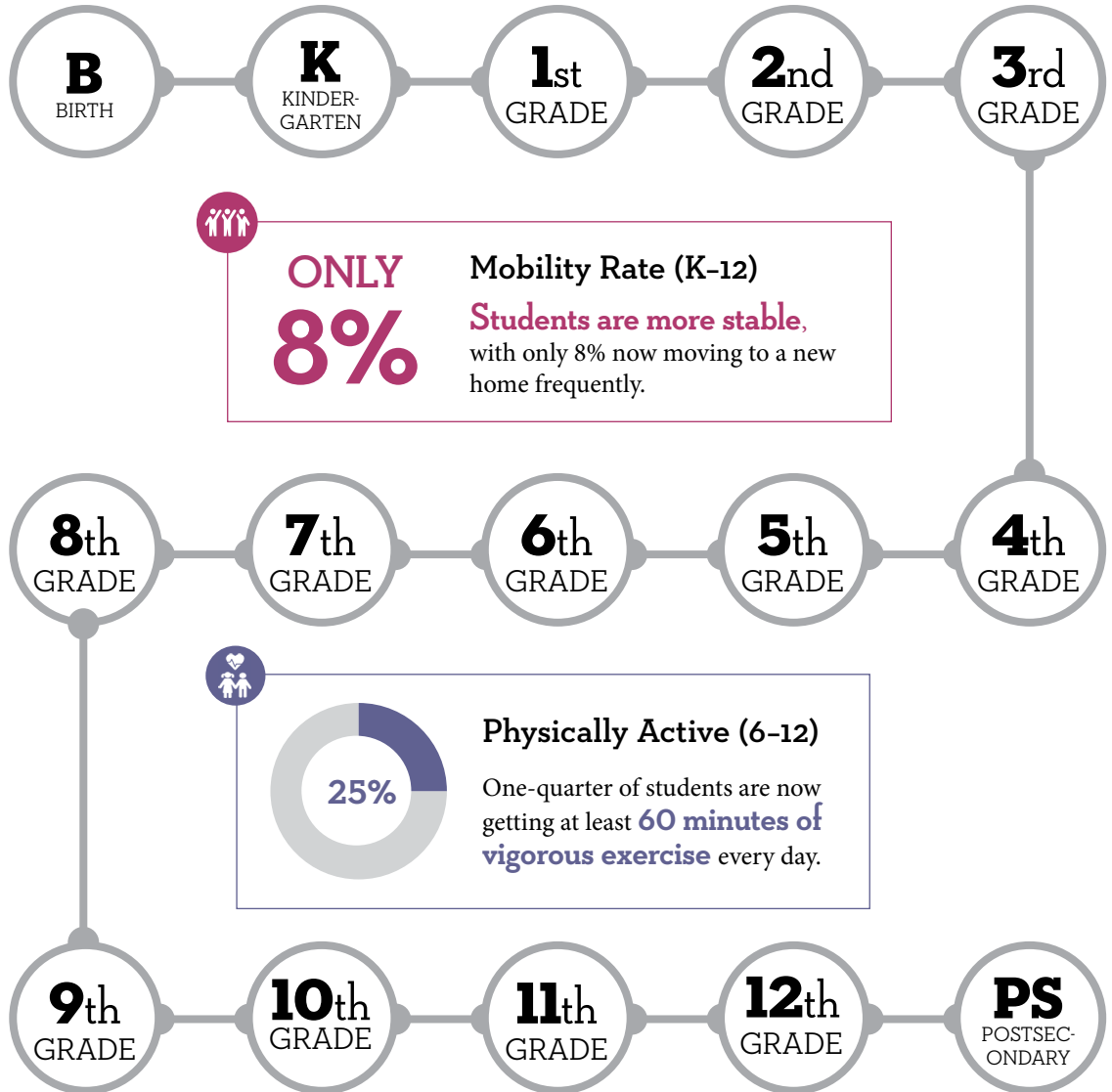
of pre-kindergarten age children do not attend preschool



18 partner agencies

MISSION

Chula Vista Promise Neighborhood is coordinated by South Bay Community Services and brings together a collaboration of partners focused on family, education, health and community to provide children in Castle Park neighborhood with the kind of opportunities they need to excel in school, get into college, find good jobs and lead healthy lives.



MAKING A DIFFERENCE

Getting kids back into the classroom is an important piece of the Chula Vista Promise Neighborhood's (CVPromise) strategy for success. Using community outreach specialists known as 'Promotoras' to engage students and families, CVPromise saw 6th-9th grade attendance increase markedly. CVPromise also gets people excited for the futures of local kids; more than 200 CVPromise partners, parents, students, residents

and civic leaders came together to honor the legacy of Caesar Chavez with a Day of Service. At Castle Park Middle School, participants completed a mural designed by students with CVPromise partners that celebrates the life and work of labor and civil rights leaders. The mural provides students with a sense of pride in themselves and in their community.