



Camden Promise Neighborhood

Camden, New Jersey

The Camden Promise Neighborhood takes a strategic and intentional approach to developing a strong network of cross-sector supports and solutions to address systemic challenges children and families face. The Center for Family Services leads the Promise Neighborhood in partnership with schools, community residents, and numerous other partners who provide local supports and services. The birth-to-college-to-career pathway of comprehensive services includes education, health, food access, safety, and other supports for families.

COMMUNITY COMPOSITION

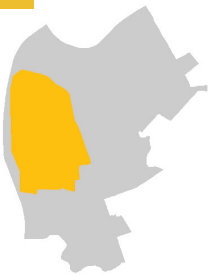
CAMDEN, NJ

African American 57%

White 10%

Asian 1%

Latino 30%



49%

of Camden PN residents live below federal poverty level

29%

of Camden PN households are families with children

\$23,416

average median household income (per year) in Camden PN

3,510

children live in the neighborhood footprint

1,895

children are enrolled in partner schools

22 partner agencies

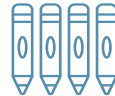
5 partner schools

PROGRAM IN ACTION

ACADEMIC CHALLENGES

Kindergartener Development

87%



of kindergarteners are ready for school

Academic Proficiency Math

13%



of students are proficient in math

Academic Proficiency ELA

16%



are proficient in English language arts

Chronic Absenteeism

37%



of students are chronically absent from school

High School Graduation

54%



of students graduate on time

SELECT STRATEGIES

- PN Early Learning Network including social worker
- Head Start and Head Start family support advocates
- Early Head Start Child Care Partnership (EHS CCP)

- Summer academic programming
- Positive behavioral intervention and supports
- School-based health centers

- Summer academic programming
- Positive behavioral intervention and supports
- School-based health centers

- School-based social supports team including social workers and engagement coordinators
- Multisystemic therapy to address antisocial behavior
- Safe Corridors program

- PN college success coaches
- Mental health support specialist
- College success curriculum

Source for academic challenges: APR ad hoc summary, year 1 and APR submission, year 2

MAKING A DIFFERENCE

Fourteen-year-old Diamond and her family came to the attention of staff from the Camden Promise Neighborhood because they did not have enough to eat. The family disclosed that they were struggling to keep up with household matters because of being overwhelmed by a recent traumatic injury Diamond had suffered, which required complicated post-hospitalization care. CPN staff worked in partnership with school staff and health care workers at Cooper University Hospital to “wrap” the family in support so that they could get a handle on this difficult situation. Now Diamond and her two younger siblings are in school every day and the entire family is back on track.